

Art Agency, Partners

Art Agency, Partners is a bespoke art advisory firm founded in 2014, and built upon decades of combined experience, to provide counsel to many of the world's leading art collectors and institutions on collection assessment and development, estate planning, and innovative approaches to museum giving and growth.

A Selection of Works from Sadie Coles HQ



Sarah Lucas, *CROSS DORIS* (2019) © Sarah Lucas, courtesy Sadie Coles HQ, London. Photo: Robert Glowacki

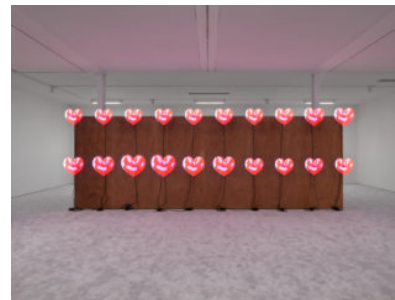
Published 20 March 2020 in [Slideshows](#)



Helen Marten, *The Gnocchi of Autumn [detail]* (2019)
© Helen Marten, courtesy Sadie Coles HQ, London.
Photo: Robert Glowacki



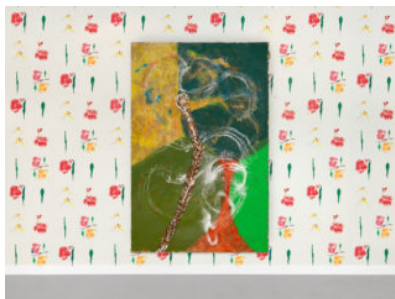
Martine Syms, *Grand Calme* (2018) Sadie Coles HQ ©
Martine Syms, courtesy Sadie Coles HQ, London.
Photo: Robert Glowacki



Installation view of Jordan Wolfson, *ARTISTS FRIENDS RACISTS* (2020) at Sadie Coles HQ © Jordan Wolfson, courtesy Sadie Coles HQ, London. Photo: Jack Hems



Sarah Lucas, *CROSS DORIS* (2019) © Sarah Lucas, courtesy Sadie Coles HQ, London. Photo: Robert Glowacki



Installation view, Alvaro Barrington, *Anansi Rising* (2020) and *Garvey loves flowers too-yah punani heaven sent* (2020) as seen at the Sadie Coles HQ booth at Frieze Los Angeles



Sarah Lucas, *COOL CHICK BABY* (2020) © Sarah Lucas, courtesy Sadie Coles HQ, London. Photo: Julian Simmons

