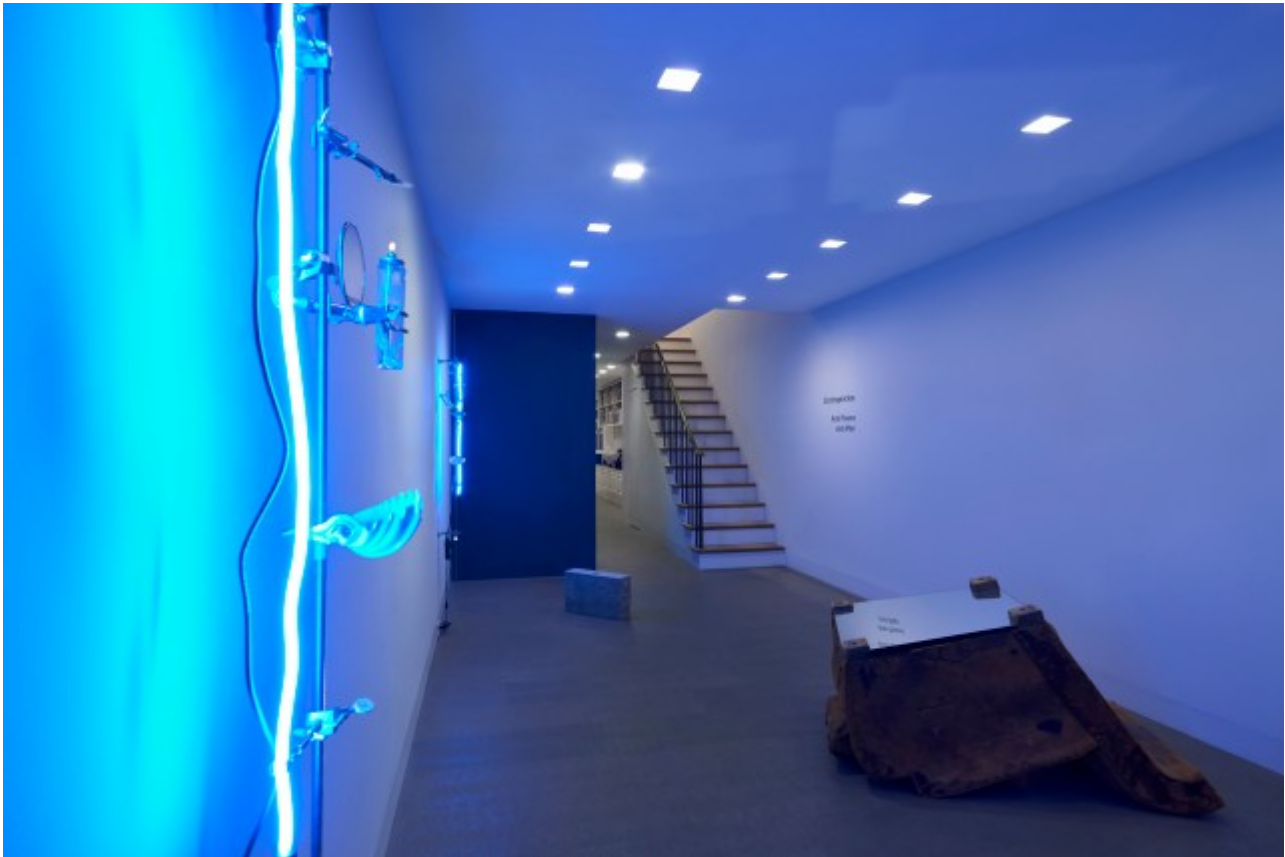


## Art Agency, Partners

Art Agency, Partners is a bespoke art advisory firm founded in 2014, and built upon decades of combined experience, to provide counsel to many of the world's leading art collectors and institutions on collection assessment and development, estate planning, and innovative approaches to museum giving and growth.

---

### **“Contingencies: Arte Povera and After” at Luxembourg & Dayan, New York (until 16 December)**

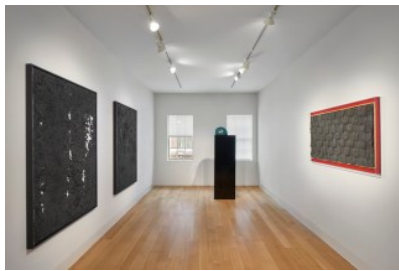


Installation view of “Contingencies: Arte Povera and After” at Luxembourg & Dayan, New York (2017)

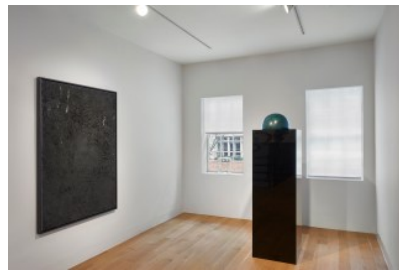
Published 16 November 2017 in [Slideshows](#)



Installation view of "Contingencies: Arte Povera and After" at Luxembourg & Dayan, New York (2017)



Installation view of "Contingencies: Arte Povera and After" at Luxembourg & Dayan, New York (2017)



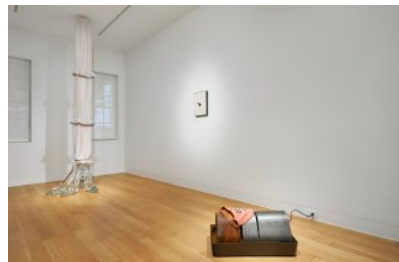
Installation view of "Contingencies: Arte Povera and After" at Luxembourg & Dayan, New York (2017)



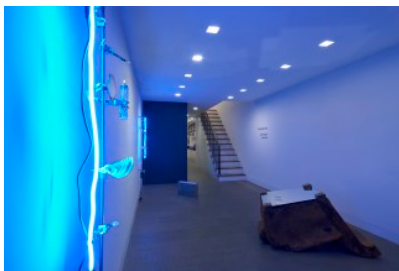
Installation view of "Contingencies: Arte Povera and After" at Luxembourg & Dayan, New York (2017)



Installation view of "Contingencies: Arte Povera and After" at Luxembourg & Dayan, New York (2017)



Installation view of "Contingencies: Arte Povera and After" at Luxembourg & Dayan, New York (2017)



Installation view of "Contingencies: Arte Povera and After" at Luxembourg & Dayan, New York (2017)

