

## Art Agency, Partners

Art Agency, Partners is a bespoke art advisory firm founded in 2014, and built upon decades of combined experience, to provide counsel to many of the world's leading art collectors and institutions on collection assessment and development, estate planning, and innovative approaches to museum giving and growth.

---

### Significant Exhibitions by Lisa Dennison



"Singular Forms (Sometimes Repeated): Art from 1951 to the Present" (March 5-May 9, 2004), Solomon R. Guggenheim Museum, New York  
© SRGF, NY. Photo credit: David Heald

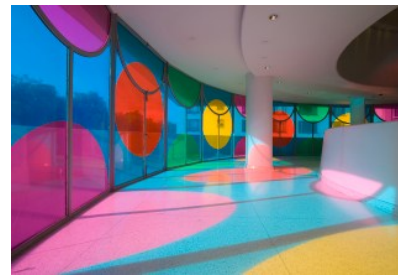
Published 27 June 2017 in [Slideshows](#)



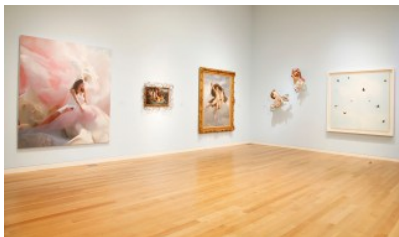
"Clemente" (October 8, 1999-January 12, 2000), Solomon R. Guggenheim Museum, New York © SRGF, NY. Photo credit: David Heald



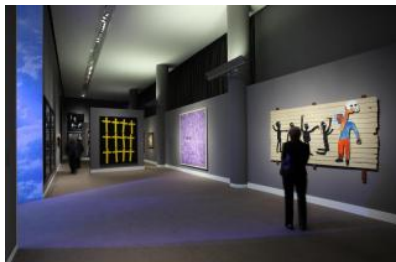
"Singular Forms (Sometimes Repeated): Art from 1951 to the Present" (March 5-May 9, 2004), Solomon R. Guggenheim Museum, New York © SRGF, NY. Photo credit: David Heald



"The Eye of the Storm: Works in situ by Daniel Buren" (March 25-June 8, 2005), Solomon R. Guggenheim Museum, New York © SRGF, NY. Photo credit: David Heald



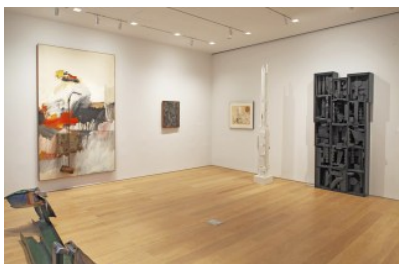
Paradise installation view, "Divine Comedy" (September 30-October 19, 2010), Sotheby's, New York



Purgatory installation view, "Divine Comedy" (September 30-October 19, 2010), Sotheby's, New York



Inferno installation view, "Divine Comedy" (September 30-October 19, 2010), Sotheby's, New York



"Hunters & Gatherers: The Art of Assemblage" (November-December 2011), Sotheby's S|2 Gallery, New York

