

Art Agency, Partners


Art Agency, Partners is a bespoke art advisory firm founded in 2014, and built upon decades of combined experience, to provide counsel to many of the world's leading art collectors and institutions on collection assessment and development, estate planning, and innovative approaches to museum giving and growth.

Between Abstraction and Representation

Slideshow: Two Sides of the Same Coin



Myron Stout, *Apollo* (c.1955)

By  Ivy Shapiro

art advisor

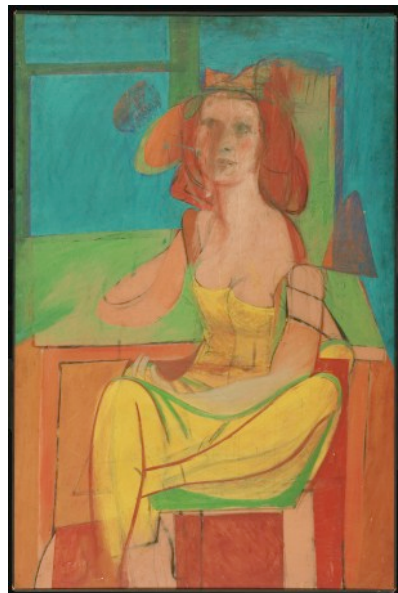
Published 2 August 2018 in [Galleries](#)



Roe Ethridge, *Double Ramen* (2013)



Roe Ethridge, *Thanksgiving 1984* (2009)



Willem de Kooning, *Seated Woman* (c.1940)



Willem de Kooning, *Red Man with Moustache* (1971)



Myron Stout, *Untitled* (1953)



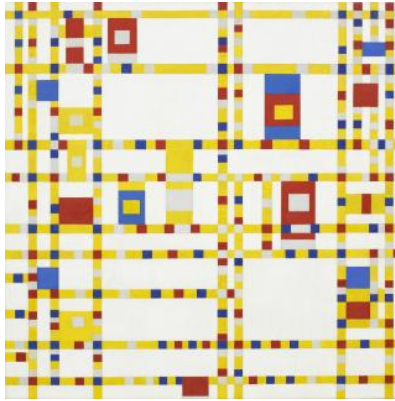
Myron Stout, *Apollo* (c.1955)



Piet Mondrian, *The Flowering Apple Tree* (1912)



Jim Hodges, *we fell through pink...* (2011)



Piet Mondrian, *Broadway Boogie Woogie* (1942)



Jim Hodges, *Untitled Shadow light purple/black* (2015)



Cecily Brown, *Keychains and Snowstorms* (2004).
Courtesy Paula Cooper Gallery. Photo credit: Rob
McKeever



Cecily Brown, *Untitled (Blood Thicker Than Mud)*
(2012). Courtesy Paula Cooper Gallery. Photo credit:
Rob McKeever



Jackson Pollock, *Autumn Rhythm (Number 30)* (1950)



Jackson Pollock, *Untitled (Figure Composition)*
(c.1938-41)



Philip Guston, *Gladiators* (1940)



Philip Guston, *The Visit* (1955)



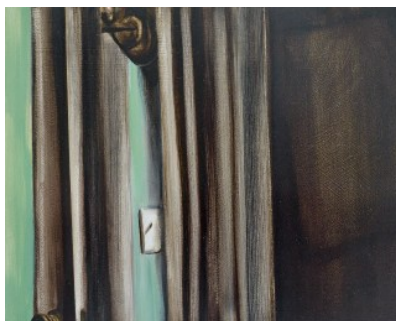
Sigmar Polke, *Drukfehler (Printing Error)* (1986)



Sigmar Polke, *Nachtkappe I (Nightcap I)* (1986)



Aubrey Saget, *Untitled* (2018)



Aubrey Saget, *Switch* (2017)



Ellen Phelan, *Red Center-Local Color*



Ellen Phelan, *Vanitas*

